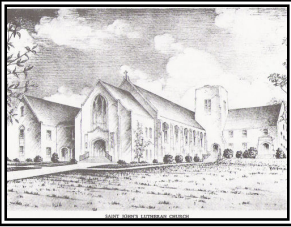


Saint John's Lutheran Church  
415 South Pine Street  
Spartanburg, SC 29302  
Phone: (864) 583-8167  
Fax: (864) 583-4025  
Website: [www.stjohns-sptbg.org](http://www.stjohns-sptbg.org)

Non-Profit Org  
US POSTAGE PAID  
Spartanburg, SC 29304  
PERMIT NO. 6

CHANGE SERVICE REQUESTED



**MAY 2010**

St. John's *Visitor*

**HOW TO CONTACT THE PASTORS**  
**583-8167** during the day  
**494-4542** at night and on weekends

*Prepared especially for:*



## **COUNCIL**

**O  
R  
N  
E  
R**

### **FYI**

**April 12, 2010 Meeting**

- ✓ The time of the *4one5Alive!* contemporary service will change to **11:00am** beginning on **May 16, 2010**.
- ✓ The Call Committee and the Church Council have unanimously approved the call of Pastor Michael Shackelford as St. John's senior pastor. A called Congregational Meeting will be held on April 25, 2010, to vote on Pastor Shackelford's call and his compensation package. The Council encourages all members of St. John's to attend this important meeting.
- ✓ The next joint service will be held on May 30, 2010. The service will be the Baccalaureate Service recognizing the graduating youth of our congregation.
- ✓ LYRA, vocal ensemble from St. Petersburg, Russia, will be performing Russian folk songs and music from the Russian Orthodox Church in the PLC on May 15, 2010 at 7:00pm.
- ✓ The LCY will be placing a paper recycling dumpster at the back of the parking lot of the PLC.
- ✓ The Property Committee will be posting diagrams of the proposed additional parking lots around the church. Comments about the proposed additional parking areas can be shared with the Property Committee.



# May Birthday's



**05/01**  
Dick Conn  
Jordan Grigg  
Roxanne Rush  
Julia Sims  
**05/03**  
Lynn Ballard  
**05/04**  
Will Burgess  
**05/05**  
George Caughman  
Ron Thomas  
**05/06**  
Hervie Thomas  
**05/07**  
Wick Harrison  
Isabel Helms  
Richard Hurteau  
John Kopchik

**05/08**  
William Schriver  
**05/10**  
Ruby Horton  
**05/11**  
Haley Scott  
**05/12**  
Hannah Collier  
**05/13**  
Meagan Deal  
Carter Heimbaugh  
Mia Heimbaugh  
Matthew Jones  
**05/14**  
Ella Metz  
**05/15**  
Ryan Carson  
**05/17**  
Scott Larson  
Andrew Sigmon  
Elizabeth Yex

**05/19**  
Linda Metz  
Joe Wyse, Sr.  
**05/20**  
Klaus Schuck  
**05/21**  
Janine Wagner  
**05/22**  
Brigita Balaram  
Trevor Davenport  
Betty Koon  
Carol Lipscomb  
**05/24**  
Morgan Harling  
**05/25**  
Claudette Juntunen  
Jonathan Lake  
**05/26**  
Kristen Kibler  
**05/27**  
J. Derham Cole, Sr.

**05/28**  
Andrew Isenhower  
Kenneth Mohrmann  
**05/30**  
Michael Dohse  
Caroline Fly  
Katherine Fly  
Abbie Van Pelt  
**05/31**  
Alexis Arnone  
Douglas Meehan  
June Miley

## OUR SUNDAY SCHEDULE

8:30AM  
TRADITIONAL WORSHIP  
9:45AM  
\*CONTEMPORARY WORSHIP *4ONE5ALIVE!*  
9:45AM  
SUNDAY SCHOOL I  
11:00AM  
TRADITIONAL WORSHIP  
11:00AM  
SUNDAY SCHOOL II  
  
*\*on May 16<sup>th</sup> the Contemporary Service will begin meeting at 11:00am*

## OUR STAFF

**Boyd Cook**, Interim Senior Pastor  
**Sean Miller**, Interim Assistant Pastor  
**Everette Lineberger**, Pastor Emeritus  
**Nyla Bartels**, Interim Parish Administrator  
**Jessica Lee**, Interim Youth Leader  
**Frankie Deal**, Music Director & Organist  
**Lee Hagglund**, Chancel Choir Director  
**Chris Sigmon**, *4one5Alive!* Worship Leader  
**Carey Gillespie**, Secretary/Adm.Asst.  
**Chip Hicks**, Property Manager  
**Members of the Congregation**, Ministers

## SOUP KITCHEN SERVANT TEAMS

St. John's has teams of persons serving at the Second Presbyterian Soup Kitchen on Fridays from 10:00am until around 12:30pm assisting with food preparation and serving, straightening up food storage, stocking shelves, helping in the "children's room," cleaning up, etc. The Servant Teams serving this month are:

**MAY 02**  
Cheryl Pettis  
Ny Bartels  
Ernie Bartels  
Lori Conn  
Norma Hambrick  
Jackie Jacobson

**MAY 09**  
Debra Cobden  
Kelsey Cobden  
Linda Turner  
Robin Hunsinger  
Gisela Mezger  
Werner Dreher

**MAY 16**  
Betty Koon  
Oley Olsen  
Brenda Ellison  
Cammy Smith



**Congregation Leaders**

**Serving Through '10**  
BENNETT CONNELLY  
BOB ISENHOWER  
TODD LIPSCOMB  
MIKE VAN PELT

**Serving Through '11**  
BRENT LYBRAND  
SCOTT LARSON  
DON FRANK  
NOEL HELMS

**Serving Through '12**  
TRACEY BISHOP  
BOB PETTIS  
JACQUIE MAIDEL  
PETER KNAPP

**Congregation Officers for 2010**

PRESIDENT..... BRENT LYBRAND  
VICE PRESIDENT..... BENNETT CONNELLY  
SECRETARY..... BOB PETTIS  
FINANCIAL SECRETARY..... SCOTT LARSON  
TREASURER..... GIL BULMAN

**Leaders of the Ministry Areas**

Christian Education..... Noel Helms  
Communication Technology..... Todd Lipscomb  
Evangelism..... Don Frank  
Fellowship..... Jacquie Maidel  
Finance..... Scott Larson  
Health Ministry..... Mike Van Pelt  
Personnel..... Bennett Connelly  
Property..... Bennett Connelly  
Social Ministry..... Bob Isenhower  
Stewardship..... Peter Knapp  
Youth Ministry..... Tracey Bishop  
Worship & Music..... Bob Pettis

**NEWS of the Women of the ELCA**

- Circle 1 Tues., May 04, 10:00am Leader and Program: TBA
- Circle 2 Mon, May 11 2:00pm Leader: Rachel Wall; meeting at Rosecrest
- Circle 3 Mon., May 03, 7:00pm Meeting & Hostess: Nan Dempsey
- Circle 4 Mon., May 31, 7:00pm Hostess: Debra Cobden
- Circle 5 Thur., May 13, 6:30pm Ladies Luncheon Set-up



**WELCA May Executive Board Meeting**  
**May 18<sup>th</sup> at 6:00pm** (*please note day and time change*)

**2010 Women of the ELCA Officers**  
Chair.....Joan Powell  
President-Elect.....Jackie Jacobson  
Secretary.....Rhonda Yex  
Treasurer.....Brenda Knapp

*If you have any questions about joining a circle and want to know more about WELCA, please call Joan Powell at 579-2268 or Jackie Jacobson at 579-1188.*

**Ladies Spring Luncheon**

**“Women and Their Shoes”**

Hosted by Circle 3 and the Women of the ELCA

Saturday, May 15<sup>th</sup>, 2010, 12:00pm in the PLC

**Reservations Required:** \$10.00 each – catered by Billy D's

**Service Project**

Please bring a pair of gently used or new shoes to donate



## St. John's Committee Meetings:

In 2010 the committees are meeting on their own scheduled days. Except for called meetings, the schedule is as follows:

- Christian Ed 12:00-last Sunday-PLC Conference
- Fellowship 5:00-1<sup>st</sup> Sunday-Fellowship Hall
- Finance 5:30-2<sup>nd</sup> Sunday-SS Conference
- Health Min. 5:00-1<sup>st</sup> Sunday-Upstairs Conf.
- Property 5:00-2<sup>nd</sup> Monday-PLC Sr. Rm.
- Social Min. 5:00-1<sup>st</sup> Sunday(Alt. Months)Parlor
- Worship/Mus 5:00-1<sup>st</sup> Sunday-SS Conference
- Youth Min. 5:30-1<sup>st</sup> Sunday-PLC Conference

## COMBINED WORSHIP SERVICE AND CONGREGATIONAL POTLUCK LUNCH!



May 30<sup>th</sup> is a 5<sup>th</sup> Sunday and we will gather as a church for **ONE SERVICE at 11:00am**. This service will be in the sanctuary followed by a fabulous **Covered Dish Lunch** to be

shared by all. To top off this wonderful morning of fellowship and worship - no desserts are needed – because the Fellowship Committee is treating the congregation to a scrumptious **Strawberry Festival!** Shortcake for everybody!

Our prayers have been answered and we have much to celebrate, so please bring friends, family, and your favorite dish to share. There is always room for more!



## LYRA Returns to St. John's!

LYRA is an amazing vocal ensemble from St. Petersburg, Russia. All of the singers are professional musicians, who sing

in several different churches in St. Petersburg. Some of the performers are also soloists in musical theatre. Through their music, Lyra wants to introduce the enormous musical heritage of the Russian Orthodox Church, as well as traditional Russian folk music. Plan to attend Lyra's performance in our **PLC at 7:00pm on May 15<sup>th</sup>**. Profits from the concert will go to the PLC debt reduction fund. We are in need of lodging for the singers (two women and three men). Anyone who is willing to help with lodging should contact Bob Pettis (599-8966 or email [robertpettis@charter.net](mailto:robertpettis@charter.net)). Tickets are now on sale in the church office or see Bob Pettis.



## APO'S STILL NEEDED!

St. John's has been very generous in donating items to package for our service men and women. These little boxes make their sacrifice a little easier and brings a touch of home.

We would like prepare such boxes at times other than just Christmas. We would like to have a record of APO addresses of the loved ones of the congregation who are in service. We would also like to keep a record of the relationship – whether it is a son, daughter, niece, nephew, etc. If you have a loved one in service, please call Freddie Wilson at 583-4474 or the church office at 583-8167.

## Why You Need To Check Your Blood Pressure . . .

Many people have high blood pressure for years without knowing it. Most of the time, there are no symptoms, but when high blood pressure goes untreated, it damages arteries and vital organs throughout the body. That's why high blood pressure is often called the silent killer. You need to know your blood pressure. Many people are unaware. Are YOU? Have your blood pressure checked. Your Health Ministry wants to help you to be aware of a healthy blood pressure and it is 120/80. To help you, we will take your blood pressure every other month at church after each service. You must be aware of what your blood pressure is and take action.

*From your Health Ministry Team  
Patty Culbreath PBT(ASCP)CMA*



## In Memoriam 2010



*Please pray for the families of these loved ones who have passed into life eternal.*

**Helen Kurlas Psillas**

*Mother of George Psillas*

**Don Blackmon**

*Brother-in-law of Patty Culbreath*

**Don Woodfill**

*Brother-in-law of Roberta Mileski*

**Betty Talbot Miller**

*Wife of the late Arthur W. Miller*

**Wilmuth (Mike) Holmberg**

*Father of Elizabeth Shull*

**J.B. Helms**

*Father of Noel Helms*

## Begin to End

Brenda Knapp

How do I begin to end? Whether it be a project, a special occasion, or saying goodbye...how do I begin to end it? Do I prepare by tidying up my workspace in order to start a new project? Do I put decorations and reminders way out of sight until needed again? Do I swallow hard to loosen the tightness in my throat, blink to suppress welling tears, wiggle a few fingers in an attempt to say goodbye? Whatever it is, there is a beginning to the end.

I know that we will begin to end our congregation's current leadership. I don't know when that will be, but I know that it is coming. Our beloved Interim Pastor Boyd Cook will end his shepherding of this body of Christ. This, for me, will be hard to end. As I have traveled on my faith journey Pastor Cook has pulled me, pushed me and prodded me along. He has thrown up his arm, circled it forward and called to me in a loud voice... "*come on, get in line, you'll love what you'll find at the end. Just come on.*" I did, and I have loved every step I took as he led the way.

I told him once that I wish I had a big basket to hold in my lap to catch all those beautiful words he would say. Then I could sit outside in the sun and pull out the words one at a time and enjoy them all over again. A big basket full of words he has used to bring me closer to God. Emphasized, expressed loudly, whispered from his heart...they all sounded so good to my ears. During his sermons I would find myself leaning in closer, stretching to hear more clearly – especially when he would reach down and tug on the left knee of his pants – a sure sign that some really good "God words" were coming.

To begin to end . . . how to start? Thank you? A start, maybe. But, how about, I love you. I love you for allowing our Heavenly Father to use you to guide us closer to Him. I love you, my brother in Christ, for seeing each member of St. John's as the unique child of God that we are. I love you for sharing your sweet Miss Maggie with us. Miss Maggie whose hugs come from deep inside her being, not from the surface of her arms. I love her hugs.

But, mainly, Pastor Boyd Cook... I love you because you love our God with an ambitious and eager heart. You want us all to know and embrace the *graced filled love*... the *unceasing love*...the *joy* of the love that comes from our Father. Thank you, our shepherd, for leading this flock to the end of this journey and readying us for the beginning of our next one.

*Amazing*  
**LOVE!**

## MAY SERVICE OPPORTUNITIES FROM SOCIAL MINISTRIES

(1) St. John's is a support congregation for **SPIHN** (Spartanburg Interfaith Hospitality Network). On May 1, we are looking for one or two people (or families) to provide a "day of entertainment" for a SPIHN family (or maybe two) from 10am-4pm. If you're interested in participating, contact Martha Sigmon.



(2) May is also **Compassion International Month** at St. John's. Several Sundays in May, you will have an opportunity to adopt a Compassion child. Lisa Isenhower can provide more information.





# MUSIC NOTES

MAY 2010

Comments about the **Handbell Choir** processional on Easter 2 were very positive. We will look for an opportunity to process again. Playing from music stands, rather than using tables, has worked well for the simpler pieces. Pieces that have a lot of bell changes or that use different techniques require tables. The Handbell prelude scheduled for May 30<sup>th</sup> was composed to reflect “**The Colors of God’s Love**” through the use of different handbell and hand chime techniques. Refer to Don Scott’s Arts column for a more thorough description.

**Many positive changes** are underway for St. John’s and several will begin in May. The **Contemporary service** will move to the 11:00 time slot on May 16<sup>th</sup>, running concurrently with the 11:00 Traditional service. **The Joint Service on May 30<sup>th</sup> will be the first to be held in the church nave**, using the traditional service format. Handbells will play the prelude, the Youth Orchband will play, the Chancel Choir will sing and there will be music from the Contemporary service. Chris Sigmon is working on that aspect since it is not possible to move all the necessary equipment for the Praise Band and Praise Team to the nave. **May 30th will also be the Baccalaureate celebration** for our graduating students.

**It is wonderful that we are open to trying new things** as the excitement builds toward the arrival of a new pastor. I believe he will find St. John’s to be a vibrant congregation that is ready to move forward!

**SJLC’s 5<sup>th</sup> Fine Arts Camp** will begin on Monday, June 14<sup>th</sup> and close on Friday, June 18<sup>th</sup> with a dinner and program by the campers. The camp provides a week of wonderful opportunities for young people to explore the Arts. Encourage your children, grandchildren, neighbors, etc. to attend. **Registration forms will be available soon.** Campers always have a wonderful time learning new skills and **pricewise, it is the best bargain in town!**

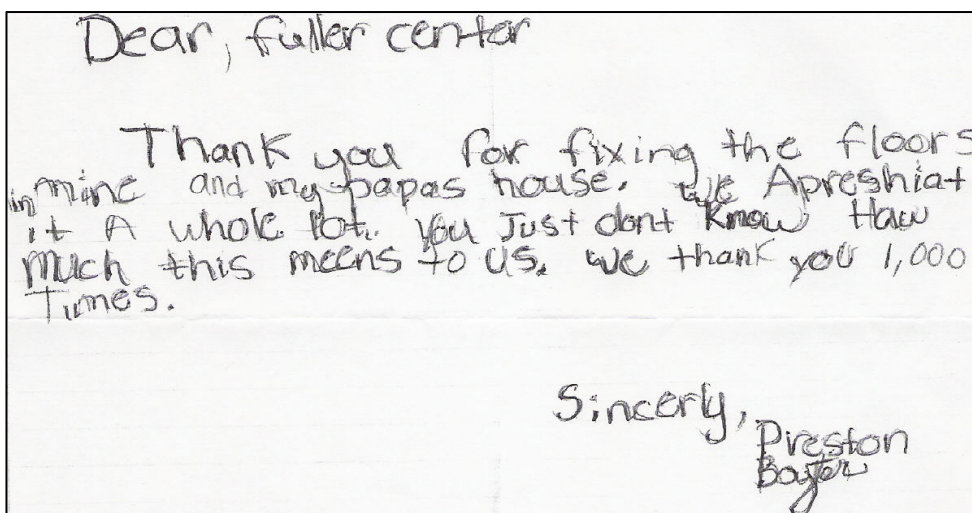
### May Special Music for 8:30 and special services; the Chancel Choir sings at 11:00 services

May 02	Easter 5; Communion; Early Choir
May 09	Easter 6; Bill Drake
May 16	Easter 7; Communion; Early Choir
May 23	Pentecost; Brass Ensemble; Early Choir
May 30	JOINT SERVICE IN SANCTUARY; Holy Trinity; Baccalaureate; Handbell Prelude; OrchBand

Frankie Deal, Music Director/Organist (978-7815)

Dear St. John’s Family,

Thank you for opening wide your red doors and hearts to the 10 students from the University of Idaho who came on their spring break to volunteer for the Fuller Center for Housing. They appreciated so very much your warm hospitality – especially the Potluck Supper the night they arrived – a wonderful welcome! The PLC was much more than they expected – comfortable rooms, showers, a kitchen, and a full court for games with our youth! It felt more like a real Spring Break than a Mission Trip. They were even able to soak up some sun to show off at home. A special thanks to Chip who took them underwing and showed them the ins and outs of the PLC and how to reach him if needed. Because of you caring and loving generosity, a grandfather with two young grandchildren are living in a much better home. During a short week, the students replaced two bedroom floors and carpeting, repaired the backporch, repaired and painted the outside of the house, painted patio furniture, replaced smoke detectors, and bought gifts for the children! Below is a letter that the young grandson wrote on the school bus on his way home to his ‘fixed up’ house. Thank you from the bottom of our hearts for your true Christian and southern hospitality! Lori Conn and the Board of the Fuller Center for Housing





## The Arts at St. John's

Don Scott

The activities of some of our arts groups appear in the listing below. Nancy Scott discusses the Psalms.

Contact/Activity	The Art's at St. John's
Linda Dohse Puppetry, Drama-to-Music	<b>101 Puppets</b> fill our puppet room waiting for a chance to share Jesus with other people. Part of the fun is to adapt our puppets to the messages and the messages to our puppets. Remember when Thomas-the-horse explained how doubting Thomas-the-disciple has to see Jesus with his eyes instead of simply believing in the resurrection of our Lord? You are invited to join the puppet ministry and help share our newest skits and songs.
Frankie Deal Music	<b>Register NOW for Music Week at Lutheridge</b> (July 11-17) The Music Note Bulletin Board also lists information on many other summer camp opportunities. The hand bell piece for May 30 <sup>th</sup> is entitled <b>The Colors of God's Love</b> by Valerie Stephenson. It memorializes Carolyn Tenery who is compared to brightly colored crayons. The color blue is represented by the hand chimes to remind us of times of sadness or reflection, handbell techniques express red to remind us of times of excitement, and the yellow opening and closing themes recall happy times for us.
Lee Hagglund Chancel Choir	<b>Draw Us In The Spirit's Tether</b> , by Harold Friedell is planned for Pentecost Sunday. This Choral Work invokes the Holy Spirit, making it appropriate for Pentecost.
John Dennis Visual Arts	<b>Christians of the 3<sup>rd</sup> Century</b> speak to us today across nearly two millenniums through the medium of their art. Their messages will be the subject of an upcoming display about <b>Early Christian Art</b> beginning in May.
Don Scott St. John's Brass	Giovanni Gabrieli gave us <b>Canzon Duodecimi Toni</b> (song on the 12 <sup>th</sup> church mode) planned for the St. John's Brass for Pentecost Sunday. The piece was created in a style similar to a <i>recercar</i> (reecher-KAHR), an imitative, contrapuntal form that eventually developed into the fugue.
Jody Scott Drama	<b>Stick Drama</b> will be a new feature of the <b>Fine Arts Day Camp</b> (June 14-18). Performers combine music, dance, and handling of sticks to illustrate Christian messages. The recent play in the PLC, <b>A Thousand Cranes</b> , played to a full house for each of two performances: 130 students from Pine Street School came for a morning show and a general audience filled the house for the evening show.

The Psalms are expressions of joy and sadness, public praise and private devotion. Their parallel structure corresponds to the natural flow of music, often with one verse making a statement and the next verse restating this idea in a similar way. (For example: Psalm 32)

**Happy are they whose transgressions are forgiven and whose sin is put away!**

**Happy are they to whom the Lord imputes no guilt and in whose spirit there is no guile!**

Other psalms may take the form of questions and answer. (For example: Psalm 15)

**Lord, who may dwell in your tabernacle? Who may abide upon your holy hill?**

**Those who lead a blameless life and do what is right, who speak the truth in their heart.**

Generally Psalm tones (or melodies) are chosen to reflect the mood of the Psalm, with a minor key reflecting a somber subject and a tone in a major key for a more joyous Psalm. United in purpose and thought, we sing these Psalms as our gift to God – *submitted by Nancy Scott.*

## Thank You

### Volunteers at Mountainview!

**Circle 2 Sisters who spend time with the Residents**

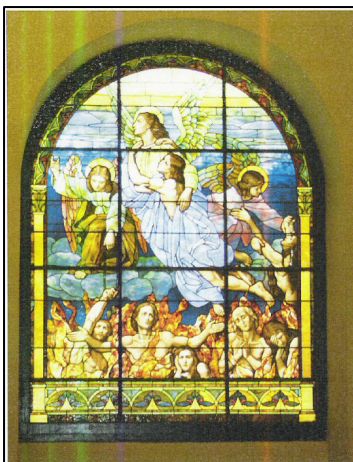
Sandra Jacobi	Norma Hambrick
Hervie Thomas	Jane Watson
Freddie Wilson	Ruth McHam
Mary Gray	Linda Ebert
Anne Burger	

**St. John's volunteers who play Bingo**

Luann Bryant	Kathie McKenzie
Beau Bryant	Cherie Kitchens
Lee Bryant	Chris Kitchens
Nancy Jane Riley	Jessica Kitchens
Debra Cobden	John Howard
Kelsey Cobden	Germaine Olsen
Claude Earnhardt	Ralph Wessinger
Betty Koon	Mary Helen Wessinger
Nina Fisher	Helen Wessinger
Ethel Metz	

**Mountainview Garden Volunteer**

Freddie Wilson



*Each one should use whatever gift  
he has received to serve others,  
faithfully administering  
God's grace in its various forms.  
1 Peter 4:10*

In Appreciation

Mountainview

Recognizes the volunteers from

**St. John's Lutheran Church**

For their dedication to  
our residents.

Thank you for your  
Volunteer Work.

*Wilson Dillard*  
Wilson Dillard, Administrator

*Rhonda Wilder*, AD  
Rhonda Wilder, Activity Director

04/22/10

## LCY (Lutheran Church Youth) News

**The LCY Recycling Project continues!** We have now determined that we can only receive funds for aluminum cans and paper. Consequently, we are limiting donation to these two items. We will have a large paper bin behind the green garage in the parking lot. We are paid by the pound for paper, so please encourage everyone you know to drop by and drop off their recycling paper here. The cans behind the PLC are now exclusively for aluminum cans - again we earn by the pound - so please save and drop off RINSED cans here! Keep in mind that the youth are raising money to donate half to Total Ministries of Spartanburg and send half to Haitian Relief. At the same time - improving our environment!

### Fun Events for MAY:

May 02 - 4:00pm Puppet Ministry and Game Night  
May 09 - 1:00pm Mother's Day! Moms vs Youth Basketball Game and light lunch  
May 16 - 4:00pm Puppet Ministry and Practice for Baccalaureate Sunday.  
May 23 - 4:00pm Puppet Ministry and Practice for Baccalaureate Sunday.  
May 30 - Congratulations - Baccalaureate Sunday! Lunch at Bangkok Thai! No LCY today!



**Calling All Parents!!** If your child is graduating from high school or college this spring, please call or email the church office to let us know! There is going to be a special Baccalaureate Service on May 30<sup>th</sup> at 11:00am to honor all graduating seniors. We need to know this information so that enough special gifts can be purchased and special recognition can be put in the bulletin to honor them. Following tradition, the seniors and their families are invited to Bangkok Thai following the service for lunch. A head count is needed, please contact Tracey Bishop at 582-6664 or 978-5010 for reservations. Thanks!

## Memo to the Congregation:

Dear Congregation:

We are writing to ask for your assistance and support. Our goal for the nursery here at St. John's is to provide the best possible care for infants and young children ages three and under. In relation to this, we are asking that *anyone under the age of 21* NOT be permitted in the nursery unless they are a paid nursery attendant or assigned volunteer. We currently have several newborns and infants under our care during nursery hours and it is imperative that that our nursery attendants and volunteers be able to give their undivided attention and care to these children without distractions or interruptions. We are asking that you help us in enforcing this policy by reminding the young people of our church of the importance of this issue. Thank you for your support in providing the best possible care for the children of both members and visitors to St. John's.



Sincerely, The Christian Education Committee

Congratulations to . . . *(drum roll please!)*

**Richard Hurteau ~ Tianna Wright ~ Ethan Miller ~ Nathaniel Bernstein  
Marissa Bernstein ~ Abby Carson ~ Cade Larson ~ Nate Helms  
Zach Van Pelt ~ Abbie Van Pelt ~ Emily Lynn Hurteau ~ William Foster  
Lukas Mezger ~ Richie Khouri ~ Matthew Jones  
Travis Schriver ~ Margo Schriver**

. . . for saying the books of the Old Testament and getting on the Pastor's Honor Roll. Great job! We are all very proud of you!

*A special thank you to CHIP, for hanging up our special banner!*





# ST JOHN'S LUTHERAN MEN IN MISSION

For our last Lutheran Men gathering until fall, we will follow tradition and meet at Mrs. Freddie Wilson's lovely home on Lake Zimmerman. Be sure to join us on the 24<sup>th</sup> of May at 6:30pm. Carl Dellinger will prepare a delicious cookout for us. A head count is helpful, so to attend please sign up on the Lutheran Men's Bulletin Board in the Fellowship Hall.

The program will be presented by Dr. B.G. Stephens on the life of St. Paul and what he means to Christians. Dr. Stephens is a native of Spartanburg and holds undergraduate degrees, a Masters, and a PhD in Chemistry from Wofford College. He has served as President of McMurray College and is Professor Emeritus and former Dean of Wofford. It will be a very interesting program on one of Dr. Stephens' favorite topics and an evening of great fellowship that we will look forward to. All men are invited and Amen for Lutheran Men!

## APRIL ATTENDANCE RECORD

### Sunday Worship Average:

8:30am – 82    9:45am – 66    11:00am – 187

Sunday School Average – 79

Wednesday Noon – 48

Maundy Thursday – 88

Good Friday - 80

## YTD General Fund as of March 31, 2010

Budgeted Expenditures	Actual Expenditures	Giving to Date
\$160,806	\$128,775	\$119,075

## YTD PLC Fund as of March 31, 2010

Budgeted Expenditures	Actual Expenditures	Giving to Date
\$33,546	\$33,546	\$26,869

Monthly Treasurer's Reports are posted on the Council Bulletin Board by the Interoffice Mailboxes.

## Home Health Equipment from Health Ministry!



Did you know that there is a Health Ministry Supply Room with all kinds of equipment for the use of our congregation? It is located at the top of the stairs (first door to the right) above the offices. It contains wheelchairs, crutches, walkers, canes, bath and shower chairs, bedside commodes, adult diapers, hospital gowns, and a case of Ensure. Should you have a need to borrow any of these things, make sure you check them out on the clipboard you will find in the room. List your name, date, and the item borrowed. By the same token – if you have any items you would like to donate, we would be pleased to accept them and thank you for your generosity. For further information, please call Pat Rubel at 579-1954.



**FYI – the Health Ministry Committee will meet Sunday, May 2<sup>nd</sup>, at 5:00pm, in the Upstairs Library.**

## Beth Moore at St. John's

We recently had the pleasure of hosting the Beth Moore Simulcast, *So Long, Insecurity*, in our Parish Life Center. It was a wonderful enriching experience and all who were there felt blessed by the love and fellowship shared at this event. We thank Erica Hurteau for the excellent study leading up to the event. There are new, hardcover *So Long, Insecurity* books by Beth Moore that are still available for purchase. For more information please contact Erica at 579-1344.



## ~ Prayer Requests ~

**Dan Brock** (498 Cider Park Dr. Boiling Springs SC 29303) who is recovering from surgery.

**Lois Ann Hesser** (361 Milhaven Dr. Spartanburg SC 29301) who is recovering from surgery.

**David Kavalas**, son of Sharon Baxley (140 Henson St. Spartanburg SC 29307 or c/o June Baxley 1845 Somerset Cir. Charleston SC 29407) who is ill.

**Era Riser** (465 Magness Dr. Spartanburg SC 29303) who is ill in the hospital.

**Larry Pearson** (423 Quail Ridge Cir. Boiling Springs SC 29316) who is recovering from surgery.

**Lois Ann Hesser** (361 Milhaven Dr. Spartanburg SC 29301) who is recovering from surgery.

**Werner Dreher** (244 Heathwood Dr. Spartanburg SC 29302) who is recovering at home.

**Joan Butehorn** (125 Creekwood Dr. Spartanburg SC 29302) who is ill.

**Al Rodd**, Norma Wertman's son-in-law, who is recovering from surgery.

**Joe Kaylor**, uncle of Bob Isenhower, who is ill.

**Pixie Bishop**, aunt of Betty Ann Bishop, who is ill.

**Linda Hammerbeck**, cousin of Jacquie Maidel, who is ill in the UK.

**Ron DeWees**, cousin of Robin Hunsinger, who is ill.

**Marie Roache**, niece of Rene Brooks, who is ill.

**Our congregation** as we follow the Holy Spirit's leadership to a new Senior Pastor.

**Members confined to home or in health care:** Marty Zschocher, Frannie Snite, Elsie Strigle, RuthAdele Biegger, Dorothy Alexander, Sarah Lee Lake, Ralph Shealy, Esther Verstegen, Ruby Connelly, Peter Fuchs, & Roscoe Roos.

**Members and Friends serving in the military:** Allyson Cooper, Ryan Dohse, Dan Drake, Chris Girardeau, Brayden Hawkins, Stephen Ruppe, John Simma, Richard Terrell, Trey Dominick, Dan Harris, Zachary Hyleman, Stan Whitten, Patrick Woodward, David Collins, Ian Krell, Micah Welch, Cory Dempsey, Christopher Shields, Mike Younkin, & Cooper Langston.

---

*Dear Church Family,*

*It is with humble appreciation that we thank you for all your cards, emails, thoughts, and prayers as we mourn the loss, yet celebrate the new life of our dear "mama", Pearl Duker Lee. The quality of her life these past few years was poor but now she is at rest in the arms of our gracious and glorious God where she can sing and dance forever. Thank you for all your support and love at this sad time. In Christian love, Dale Kibler and Veronica Peroglio*



*Thank you to our Family at St. John's for your prayers, visits, cards, and flowers during Wanda's last months. Your love and support was very special to us.  
Tom and Katrina Austin*

---

**Dear Friends,** A big thank you for the wonderful reception last Sunday! The cake topped with the picture of the Chancel window at St. John's was magnificent and delicious! We rejoice over the gifts of a Bible carrier for traveling, a framed picture of St. John's, and the wonderful thoughts on the enclosed card signed by all of you! We are very grateful for all that you at St. John's have done for us during these past seven and one half years in making us feel so welcomed and loved. We have come to see you as our friends and family. We will on occasion continue to worship and share fellowship with you. God's blessings on you and your new staff as you work, share, and grow together as the caring people of God! Yours in fiery Spirit and loving companionship,  
Pastor Shull and Christine



---

**Dear Church Family,** Thank you so much for all your expressions of love and concern during my recent thyroid surgery. Your prayers were felt and I ask for you to continue praying that I will regain my energy back as it was before. God bless you all. Jack and Norma Hambrick



*To my wonderful Church Family, may I express my heartfelt appreciation for the prayers, cards of condolence, and very kind expressions of sympathy that I received following the passing of my father, Mike Holmberg. Your love and support helped more than you can know at this difficult time. May God bless you all, Elizabeth Shull*

# Those Privileged to Serve in MAY 2010

## ALTAR GUILD-Traditional Services

- 02** Marilyn Anderson, Pat Rubel, Cammy Smith  
**09** Marilyn Anderson, Julia Fuchs  
**16** Judy Lybrand, Tanya Hindman, Hervie Thomas  
**23** Barbara Thomas, Pat Rubel, Cammy Smith  
**30** June Miley, Mary Helen Wessinger

## ACOLYTES

- |                          |                |
|--------------------------|----------------|
| <b>8:30</b>              | <b>11:00</b>   |
| <b>02</b> Abbie Lipscomb | Aksel Wagner   |
| <b>09</b> Ben Bernstein  | Holly Deal     |
| <b>16</b> Kayla Lipscomb | Lacey Key      |
| <b>23</b> Morgan Nichols | Mikaela Jones  |
| <b>30</b> Abbie Lipscomb | Meredith Scott |

## 11:00 CRUCIFERS

- 02** Troy Rodway  
**09** Ryan Brown  
**16** Beau Bryant  
**23** Lee Bryant  
**30** Meghan Jones

## 8:30 CRUCIFER

Ben Bernstein-*Pentecost*

## COFFEE

- |                                      |                 |                                                                                       |
|--------------------------------------|-----------------|---------------------------------------------------------------------------------------|
| <b>8:30</b>                          | <b>11:00</b>    |                                                                                       |
| <b>02</b> Contemporary SS            | Contemporary SS | <i>Volunteers are needed to sign up for coffee! See list on back of kitchen door.</i> |
| <b>09</b> Circle 5                   | Circle 5        |                                                                                       |
| <b>16</b> Alpha/Omega SS             | Alpha/Omega SS  |                                                                                       |
| <b>23</b> Circle 4                   | Circle 4        |                                                                                       |
| <b>30</b> Combined Service - Potluck |                 |                                                                                       |

## CONTEMPORARY

- 02** Carrie Khouri  
**09** Tonya Wright  
**16** Cindy & Chelsey Hicks, Marlene Donna  
**23** Donna Sheridan, Barbara Corn  
**30** Combined Service - Potluck

## LECTORS

- |                          |                 |
|--------------------------|-----------------|
| <b>8:30</b>              | <b>11:00</b>    |
| <b>02</b> Charlie Powell | Ed Maidel       |
| <b>09</b> Charlie Powell | Ed Maidel       |
| <b>16</b> Joanne Kopchik | Lois Ann Hesser |
| <b>23</b> Joanne Kopchik | Lois Ann Hesser |
| <b>30</b> Rick Sprang    | Nancy Scott     |

## PEW POCKET STUFFERS

Joanne Kopchik

## HOSPITAL VISITATION

- 02** Tanya Hindman  
**09** George & Vicki Johnson  
**16** George & Vicki Johnson  
**23** Linda Turner & Cheryl Pettis  
**30** Linda Turner & Cheryl Pettis

## HOME VISITATION

- 02** Cheryl Pettis  
**09** Ella Metze & Jean Spearman  
**16** Norma Wertman & Martha Williams  
**23** John & Anne Burger  
**30** Lori Conn

## COMMUNION ASSISTANT/COUNCIL GREETER

Bob Pettis

## 8:30 TRADITIONAL GREETERS

- 02** Ny Bartels, Ernie Bartels, Iris Branen  
**09** Rick Sprang, Ruth McHam, Kare Kragas  
**16** Ny Bartels, Ernie Bartels, Iris Branen  
**23** Rick Sprang, Ruth McHam, Kare Kragas  
**30** Jack Hambrick, Norma Hambrick, Wallace Revels

## CONTEMPORARY GREETERS

- |                          |                         |
|--------------------------|-------------------------|
| <b>02</b> Bob Isenhower  | <b>23</b> Todd Lipscomb |
| <b>09</b> Rick Cobden    | <b>30</b> Martha Sigmon |
| <b>16</b> Donna Sheridan |                         |

## 11:00 TRADITIONAL GREETERS

- 02** Phyllis Daniels, Brenda Knapp, Linda Turner, Charles Clemmer  
**09** Kent Collier, Helen Collier, Jack Pfeiffer, Janice Pfeiffer  
**16** Everette/Ann Lineberger, Doug Hurteau, Carl Dellinger  
**23** Don Frank, Neita Frank, Deb Galli, Tracey Bishop  
**30** Julia Fuchs, Mark Homas, Hervie Thomas, Charlie Dickson

## STEEPLE BELL RINGERS

- |                            |                |
|----------------------------|----------------|
| <b>8:30</b>                | <b>11:00</b>   |
| <b>02</b> John Mileski     | Meredith Scott |
| <b>09</b> Chris Wright     | John Jacobson  |
| <b>16</b> John Mileski     | Ron Thomas     |
| <b>23</b> Shirley Connelly | John Jacobson  |
| <b>30</b> Chris Wright     | Ron Thomas     |

## USHERS FOR MAY

- 8:30** Rick Sprang, Chris Wright, Bob Pettis Tom Ringer  
**11:00** George Johnson, Deb Galli, Brenda Knapp, Peter Knapp

## ALTAR FLOWERS

- 02** Don & Nancy Scott  
**09** John & Joanne Kopchik  
**16** Rhonda Yex  
**23** Layton-James Wedding  
**30** Ludwig & Elise Tienken

## ALTAR FLOWER DELIVERY





- 02** Linda Ebert & Anne Burger  
**09** Julia Fuchs & Betty Sheridan  
**16** Julia Fuchs & Betty Sheridan  
**23** Ella Metze & Norma Wertman  
**30** Ella Metze & Norma Wertman

## NURSERY ATTENDANTS

- |                          |          |
|--------------------------|----------|
| <b>02</b> Rachel Mileski | Lipscomb |
| <b>09</b> Brittany Rice  | Mileski  |
| <b>16</b> Megan Healy    | Carson   |
| <b>23</b> Hayley Scott   | Porter   |
| <b>30</b> Rachel Mileski | Mezger   |



# MAY 2010

Sunday	Monday	Tuesday	Wednesday	Thursday	Friday	Saturday
						1
<b>2</b> 8:00am Early Choir <b>8:30am Worship</b> <b>9:45am 4one5</b> 9:45am SS I 11:00am SS II <b>11:00am Worship</b> 3:00pm Puppets 4:00pm LCY 5:00pm Social Min 5:00pm Fellowship 5:00pm Health Min 5:00pm Wor/Music 5:00pm Com/Tech 5:30pm Finance 5:30pm Confirmation	<b>3</b> 10:00am Chrismons 6:15pm Exec Council Meeting 7:00pm Circle 3	<b>4</b> 8:00am Men a Plenty Bible Study 10:00am Staff Meet 10:00am Circle 1 7:00pm Praise Band	<b>5</b> 12:15pm Worship 1:00pm Lunch 6:30pm SJ Brass 7:30pm Chancel Choir	<b>6</b> 5:30pm Handbells 7:00pm Men's Ensemble 7:00pm NAMI	<b>7</b>	<b>8</b>
<b>9 MOTHER'S DAY</b> 8:00am Early Choir 8:30am Worship <b>9:45am 4one5</b> 9:45am SS I 11:00am SS II 11:00am Worship Mezger Baptism 1:00pm LCY Mom/Youth Lunch & Basketball 5:30pm Confirmation	<b>10</b> 10:00am Chrismons 2:00pm Circle 2 7:00pm Council Meeting	<b>11</b> 8:00am Men a Plenty Bible Study 10:00am Staff Meet 7:00pm Praise Band	<b>12</b> 12:15pm Worship 1:00pm Lunch 6:30pm SJ Brass 7:30pm Chancel Choir	<b>13</b> 10:00am On the Go-Flatrock 5:30pm Handbells 6:00 Girl Scout Training 6:30pm Marathon Bridge 6:30pm Circle 5 7:00pm Men's Ensemble	<b>14</b> Ladies Luncheon Set Up	<b>15</b>  <b>12:00pm Annual            Ladies Luncheon</b>  <b>7:00pm LYRA            Concert</b>
<b>16</b> 8:00am Early Choir 8:30am Worship 9:45am SS I 11:00am Worship <b>11:00am Contemp</b> 3:00pm Puppets 4:00pm LCY	<b>17</b> 10:00am Chrismons	<b>18</b> 8:00am Men a Plenty Bible Study 10:00am Staff Meet 6:00pm WELCA Board Meeting 7:00pm Praise Band	<b>19</b> 12:15pm Worship 1:00pm Lunch 6:30pm SJ Brass 7:30pm Chancel Choir	<b>20</b> 5:30pm Handbells 7:00pm Men's Ensemble	<b>21</b> Layton-James Rehearsal-Fello Hall	<b>22</b> 5:00pm Layton- James Wedding & 6:00pm Reception - PLC
<b>23 PENTECOST</b> 8:00am Early Choir 8:30am Worship 9:45am Combined SS in PLC 11:00am Worship 11:00am Contemp 12:00pm Chris Ed 3:00pm Puppets 4:00pm LCY	<b>24</b> 10:00am Chrismons 6:30pm Lutheran Men 6:30pm Circle 4	<b>25</b> 8:00am Men a Plenty Bible Study 10:00am Staff Meet 7:00pm Praise Band	<b>26</b> 12:00pm Locker Room Men 12:15pm Worship 1:00pm Lunch 6:30pm SJ Brass 7:30pm Chancel Choir	<b>27</b> 5:30pm Handbells 7:00pm Men's Ensemble	<b>28</b>	<b>29</b>
<b>30</b> <b>BACCALAUREATE</b> 11:00am COMBINED WORSHIP SERVICE 12:00pm POTLUCK Strawberry Festival  4:00pm LCY	<b>31</b> <b>MEMORIAL DAY            HOLIDAY            OFFICE CLOSED</b>					